

Arrow guide



Pull



Push



Point



Twist

Preparation

Before you start

Preparation

1

Before following the user steps described in this user guide, please make sure to carefully read the information and disclaimers in the bottom of the last page. Please note that the information provided in this guide is not a substitute for professional medical advice or for reading the instructions for use (IFU) that comes with the infusion set.



Preparation

2

Wash your hands before inserting the infusion set.



Preparation

3

Choose an insertion site as recommended by your healthcare provider. **Do not** use an area right next to your previous infusion site.



Preparation

4

Clean the area for insertion with a disinfectant as directed by your healthcare provider. Be sure the area is air dry before inserting the infusion set.

Insertion



Insertion

5

Pull the red tape to remove the sterile plastic seal.

Caution

Ensure sterility by checking if the sterile paper and tamperproof seal are undamaged. **Do not** use if the infusion set is already open or has been damaged.



Insertion

6

Remove the sterile paper.



Insertion

7

To remove the lid, press the three raised dots on each side of the lid firmly with one hand and lift up the lid with the other hand.

Caution

Be careful not to bend or touch the introducer needle when preparing the serter and infusion set.



Insertion

8

To unwind the tubing, carefully twist the beginning of the tubing out of the slot. Now unwind the tubing from the serter by pulling it carefully upwards.

Caution

Do not pull too hard when the tubing is fully released to avoid accidentally lifting the infusion set from the serter.

Arrow guide



Pull



Push

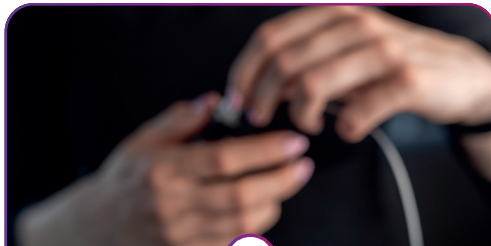


Point



Twist

Insertion



Insertion 9

Follow your pump manufacturer's instructions for use to connect the infusion set tubing to the pump reservoir and pump.



Insertion 10

Prime the infusion set according to the pump manufacturer's instructions for use until insulin dispenses from the needle. Ensure there are no air bubbles in the tubing.

⚠ Caution

Hold the infusion set with the needle pointing down to avoid contact between medication and the adhesive backing paper. Never fill the tubing while the infusion set is connected to your body.



Insertion 11

Pull up gently to remove the backing paper from the adhesive.

📌 Tip

Do not pull too hard to avoid accidentally lifting the infusion set from the serter.



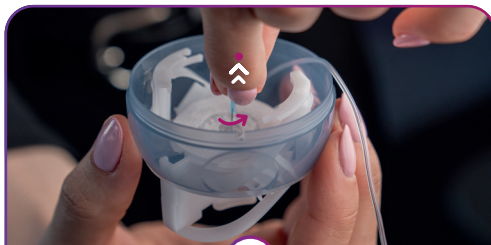
Insertion 12

To prepare the serter, grip and lightly press the lined indentations on each side. Pull the spring until you hear a "click".

📌 Tip

Before pulling the spring, make sure that the tubing hangs loosely over the edge and is not placed in one of the slots or fixated by your hand as you may risk dislodging the infusion set from the serter.

Insertion



Insertion 13

Remove the needle guard by gently twisting and then carefully pulling it. Avoid touching the adhesive tape when removing the needle guard.

📌 Tip

Do not skip twisting the needle guard before pulling it off as it helps removing it gently.



Insertion 14

Before positioning the infusion set, place the tubing in the closest slot to ensure that it is not caught underneath the serter during insertion.

📌 Tip

Do not pull too hard when placing the tubing in the slot to avoid dislodging the infusion set from the serter.

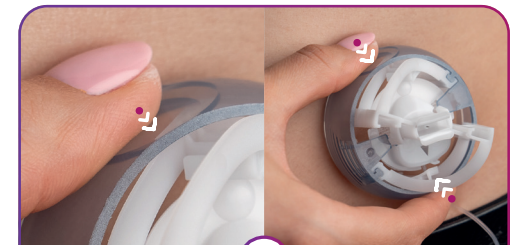
⚠ Caution

If the infusion set is not securely placed in the serter with the needle pointing straight ahead prior to insertion, pain or minor injury may occur.



Insertion 15

Check that the soft cannula is below the tip of the introducer needle. **Do not** skip this step as it is critical to ensure correct insertion.



Insertion 16

To insert the infusion set, position the serter over the insertion site and simultaneously press the round indentations on either side of the serter.

📌 Tip

The triangle shape inside the serter points to the direction the tubing will face after insertion.

Arrow guide



Pull



Push



Point



Twist

Insertion



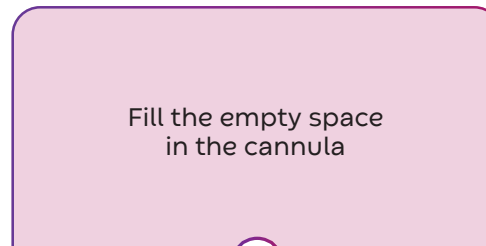
Insertion 17

Push gently on the center of theserter to secure the adhesive on the skin. This helps to ensure that your infusion set sits securely on the body when removing theserter.



Insertion 18

Remove theserter and introducer needle by grasping the center and pulling it gently back. Gently massage the adhesive tape to make sure it sits neatly on the skin.



Insertion 19

Fill the empty space in the cannula

Fill the empty space in the cannula following your pump manufacturer's instructions.

⚠ Caution

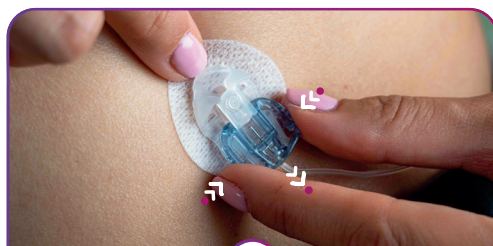
Always check your blood glucose level one to three hours after insertion to ensure the infusion set is working properly. Measure your blood glucose on a regular basis. Discuss this with your healthcare provider.



Insertion 20

To close theserter for safe disposal, push the lid back on theserter until you hear a "click".

Disconnecting



Disconnecting A

This infusion set allows you to temporarily disconnect your pump without having to change the infusion set.

Hold the adhesive tape in place by placing a finger just in front of the cannula housing, and gently squeeze the sides of the connector. Pull the connector needle straight out from the cannula housing.



Disconnecting B

Insert the disconnect cover into the cannula housing until you hear a "click".

Arrow guide



Pull



Push

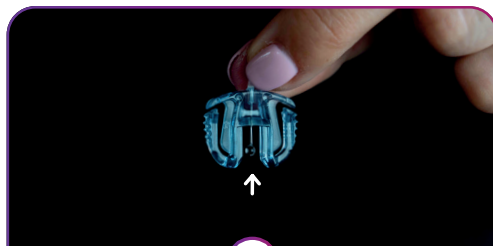


Point



Twist

Reconnecting



Reconnecting

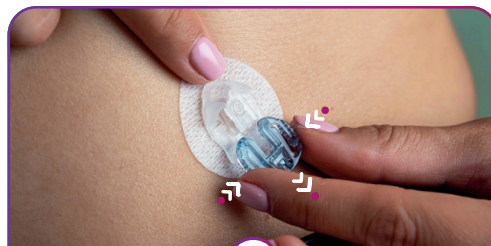
C

Before reconnecting the infusion set, make sure the adhesive still sits securely on the skin.

If necessary, prime the infusion set until insulin dispenses from the needle.

⚠ Caution

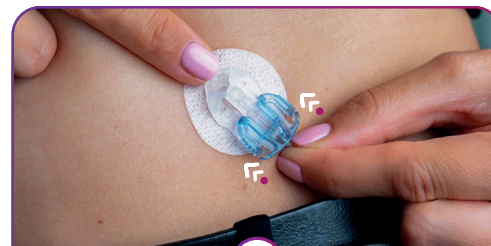
When priming the infusion set, hold the infusion set with the needle pointing down. Never fill the tubing while the infusion set is connected to your body.



Reconnecting

D

Place a finger on the adhesive tape just in front of the cannula housing. Remove the disconnect cover.



Reconnecting

E

Place a finger on the adhesive tape just in front of the cannula housing.

Push the connector needle straight in until you hear a "click".