



FLAT | ACCORDION | CONVEX

## Stoma care **Application Guide**

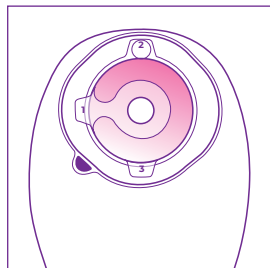
Convatec Mouldable Technology™  
One-piece and Two-piece Solutions



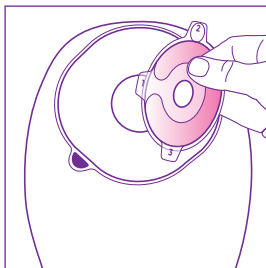
# Convatec Mouldable Technology™

## APPLICATION GUIDE

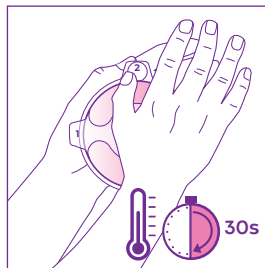
ESTEEM™  ONE-PIECE



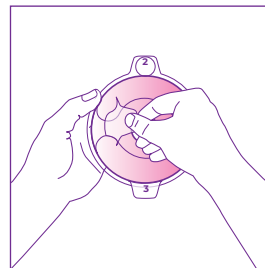
Disc



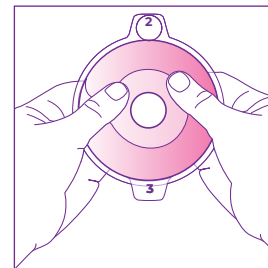
Remove mouldable disc from pouch.



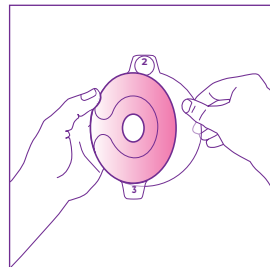
Warm disc up in hands for 30 seconds.



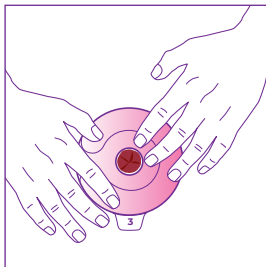
Remove liner marked 1. This is the moulding side.



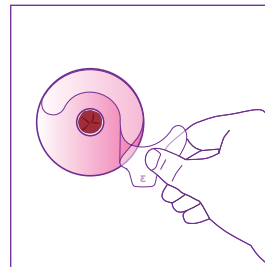
Roll and mould the disc to the size of the stoma. **Do not stretch, pull or cut.** Pinch into place once desired size is reached.



Remove liner marked 2. This side will go on the skin.



Place the disc on the body. Push the roll of adhesive towards the stoma to ensure a snug fit.



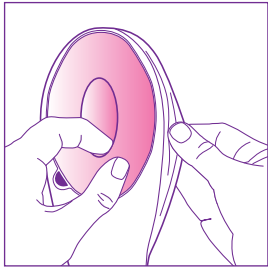
Remove liner marked 3.



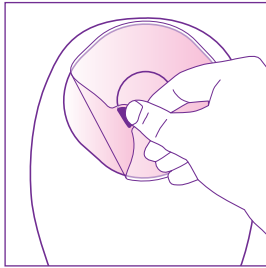
Scan the QR code to watch the application video or use the link [Bit.ly/mouldable-application](https://bit.ly/mouldable-application)

## APPLYING THE POUCH TO THE DISC

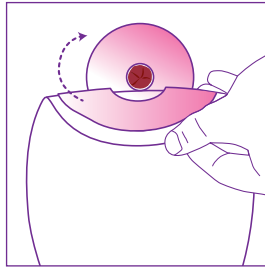
Ensure you close your Drainable or Urostomy pouch before application



Separate pouch films to allow air to enter

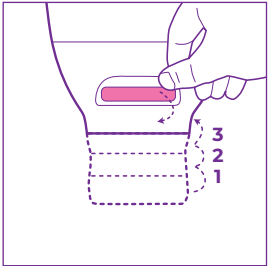


Remove release liner marked with a blue dot.

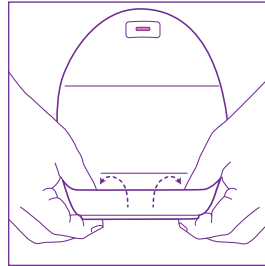
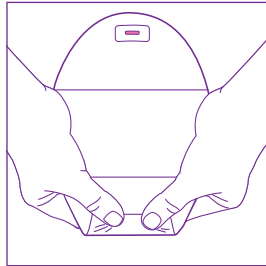


Starting at the bottom, apply pouch evenly over the mouldable disc. Always check disc and pouch are completely sealed together. Rebounding Memory Technology™ will allow the disc to reform with your stoma throughout the day.

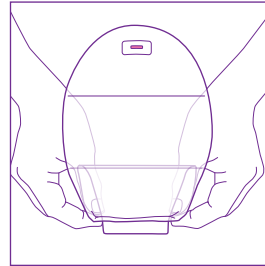
## CLOSING YOUR DRAINABLE POUCH



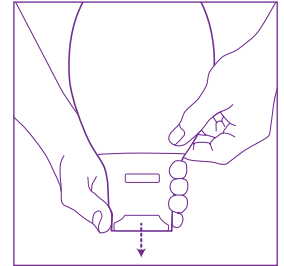
**Invisiclose® Closure** Fold tail closure with outlet strip until interlocking closures overlap. Press interlocking closures together across the width of the tail and squeeze until you feel them close. **Lock-it Pocket™** Turn pocket inside-out to conceal the tail closure.



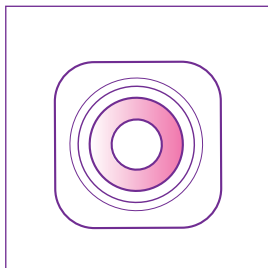
## EMPTYING YOUR DRAINABLE POUCH



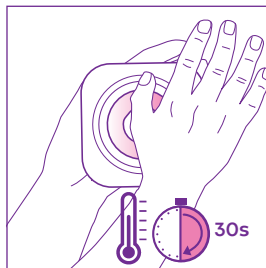
**Invisiclose® Closure** Take out the tail from Lock-it Pocket™. Unfold pouch closure and open the tail by squeezing in the outlet strips; drain pouch.



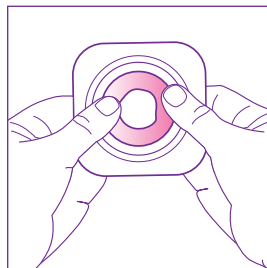
## TWO-PIECE Steps applicable for baseplates: NATURA® ACCORDION | NATURA® | ESTEEM SYNERGY®



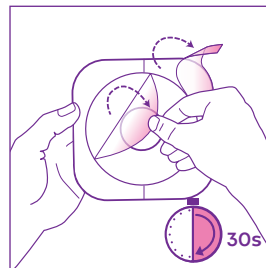
Baseplate.



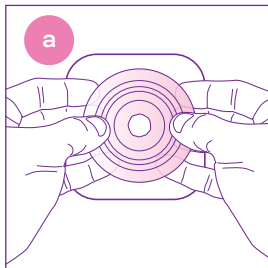
Warm baseplate up in hands for 30 seconds.



Roll and mould the baseplate to the size of the stoma. **Do not stretch, pull or cut.** Pinch into place once desired size is reached.



Remove release liner. Press the baseplate into place and if necessary re-adjust to create a snug fit. Smooth and hold the baseplate in place for 30 seconds.

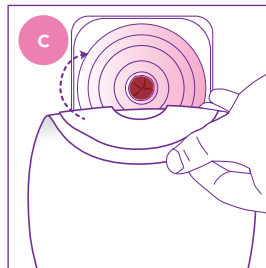


### Attaching to accordion baseplate **PULL UP**

Accordion baseplate and hold with thumbs on top and fingers underneath. Align coupling of pouch and baseplate. Start at the bottom and apply pressure around the coupling until the pouch and baseplate snap together. Then place the Accordion baseplate in the **DOWN** position for a flat profile.

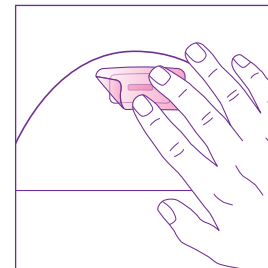


Apply pouch to **Natura®** baseplate.



Apply pouch to **Esteem Synergy®** baseplate

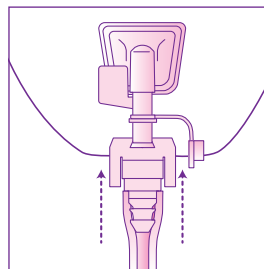
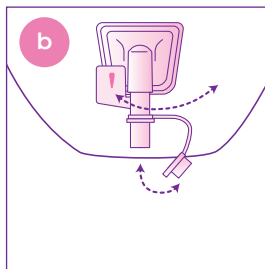
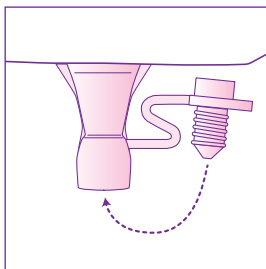
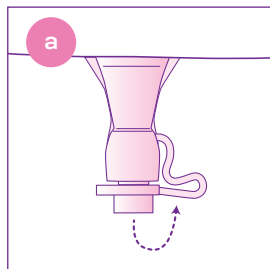
## FILTER



Cover the filter with a filter sticker for any water activity and remove after activity.

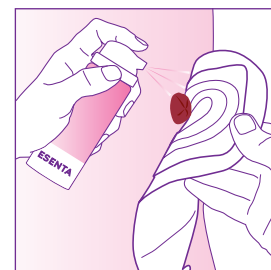
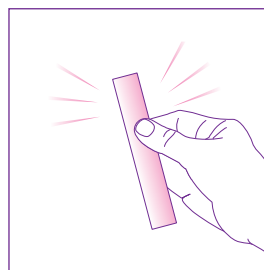
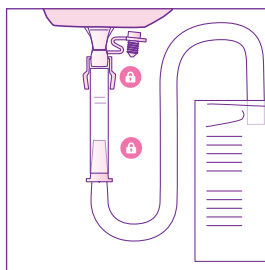
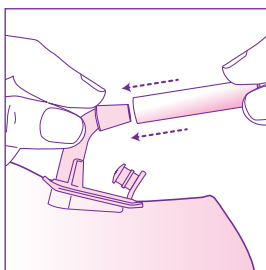
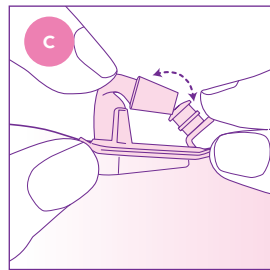
# UROSTOMY POUCH - OPEN, CLOSE AND CONNECTING TO NIGHT BAG

Follow instructions for your pouch tap, Each tap type has its own connector



**a. Natura®+ Soft Tap**  
Open and close.

**b. Accuseal™ Tap**  
Open and close.  
Connect Accuseal™ connector.



**c. Fold-up Tap** Place tap in or out of tap holder to open and close.

Connect Fold-up Tap connector.

**Connecting your night bag** Once your pouch tap is open, attach the connector to the tap and on the other end connect your night bag to the connector. Check all connection points are secure.

**Retain your connector** each time you dispose of your night bag.

For gentle removal use ESENTA™ wipe or spray around edge of the baseplate and wait a few seconds. Gently peel baseplate away from skin.

## REMOVAL

For more information call UK **0800 282 254** ROI **1800 721 721**

# Accessories

## Support Products

Accessories - designed for easy daily use with one-piece and two-piece stoma solutions.



### Pouch Removal



#### ESENTA™ Sting Free Adhesive Remover Spray and Wipes

ESENTA™ Sting-free adhesive spray and wipes quickly removes all adhesive residue and helps to reduce painful skin stripping and skin damage. For fast and easy adhesive release feeling silky and smooth.



### Skin Preparation



#### ESENTA™ Sting Free Skin Barrier Spray and Wipes

ESENTA™ skin barrier creates a breathable barrier on the skin, helping to protect the skin for up to 72 hours<sup>1</sup>. Reducing the risk of skin damage and irritation caused by body wastes, enzymes, and adhesives. Safe and effective even with frequent use.



### Added Security



#### Diamonds™ Gelling and Odour Control Sachets

Super absorbent gelling sachets with unique ActiveOne™ odour control. Prevents leaks, odour and noise. Provides a flatter, discreet pouch.

To order call UK **0800 282 254** ROI **1800 721 721**



## Helping people live life on their terms

Our accessories help keep skin healthy. They provide essential protection against leaks, odours and ballooning as well as making adhesive removal gentle and effective to help minimise pain and discomfort.

Together our accessories help give people the protection they need to be confident and comfortable to do the things they love.





# Helpful numbers

To speak to one of our Product Specialists

Call UK **0800 282 254** - ROI **1800 721 721**

To speak to one of our me+™ Advisors

Call UK **0800 467 866** - ROI **1800 721 721**

To speak to our Clinical Nurse Specialist

Call UK **0800 085 2516** - ROI **1800 721 721**

To speak to one of our Amcare™ Agents\*

Call **0800 88 50 50**



**\*Amcare™ not available in Ireland**

. 1 - Reference: 1. Voegeli D, LBF® "No-Sting" Barrier Wipes: Skin Care Using Advanced SiliconeTechnology. British Journal of Nursing, 2008; Vol. 17: No. 7.  
©2023 Convatec Inc. ®/™ all the trademarks are the property of Convatec group companies. AP-030473-MRL-GB OST339v3-RB



Printed on FSC mix recycled paper. FSC forests are managed  
with consideration for people, wildlife and the environment.